

**SLOUGH WELLBEING BOARD - WEDNESDAY, 15TH NOVEMBER, 2017**

**SUPPLEMENTARY PAPERS**

The following Papers were tabled at the meeting.

<b><u>AGENDA ITEM</u></b>	<b><u>REPORT TITLE</u></b>	<b><u>PAGE</u></b>	<b><u>WARD</u></b>
7.	Themed Discussion: Prevention Strategy (Presentation slides)	1 - 8	All

This page is intentionally left blank

# Prevention Strategy Workshop Slough Wellbeing Board

Fatima Ndanusa

Public Health Programme Manager

15 November 2017



# Workshop Aim

*“Understand and utilise what added value the Slough Wellbeing Board can bring to the Prevention Strategy & Action Plan”*



# What makes us healthy?

## SOCIAL DETERMINANTS OF HEALTH

The social determinants of health are the conditions in which we are born, we grow and age, and in which we live and work. The factors below impact on our health and wellbeing.



Childhood experiences



Housing



Education



Social support



Family income



Employment



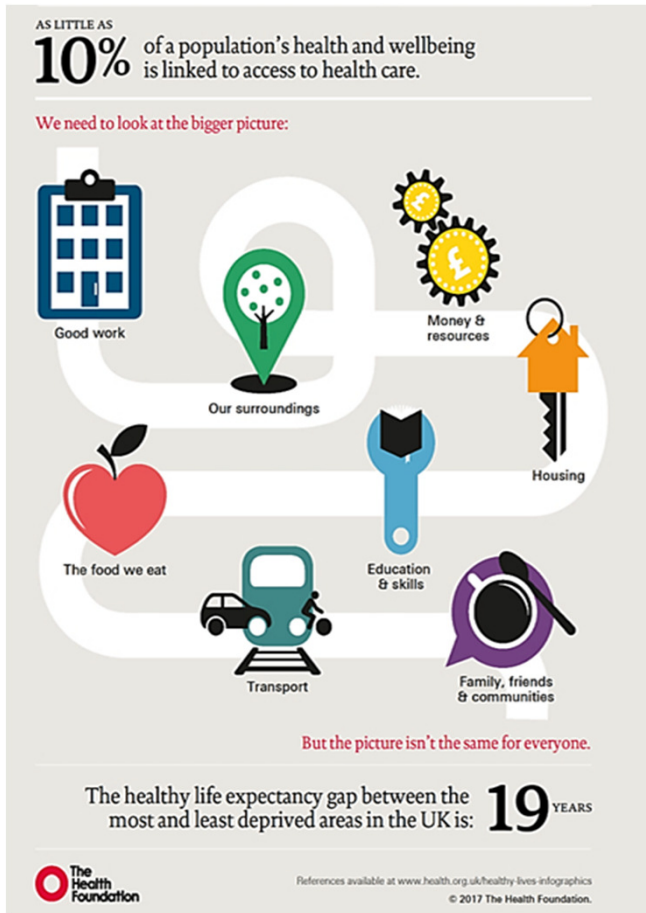
Our communities



Access to health services

Source: NHS Health Scotland

# What makes us healthy?



children in deprived areas are **9x** less likely to have access to green spaces and places to play

People with the lowest life expectancy are **3x** more likely to have no qualifications compared to those with highest life expectancy

Every **£1** invested housing support for vulnerable people delivers nearly **£2** of benefit through costs avoided to public services including care, health and crime costs



# Slough Wellbeing Board Leadership

- is well placed to provide a system wide strategic leadership role in raising issues
- has capability to drive broad systems-level changes
- can promote greater integration and partnership between multi- sectoral organisations



# Activity 1 – Mapping Levers

- Discuss and map system levers/enablers that help address the social determinants of health
- Discuss collectively how the board can use these to drive action to tackle wider health determinants





## Activity 2 – Taking Action

- Explore and discuss specific strategic action (s) to tackle gaps in any of the following:
  - Violence (Against Women and Girls+)
  - Drugs and Alcohol Misuse
  - Social Isolation
- Feedback key possible solutions that will lead to sustained change



# Next Steps

- Board agreement re ideas to take forward
- Innovation Café

